

Range Mira & Champ

Mira 8000
P200-215



Eclairage public autonome



The **Mira 8000™** is a stand-alone solar lighting system conceived for public professional and private outdoor lighting.

The **Mira 8000™** is equipped with an LED head powered by hei photovoltaic power tube with an output of 420 Wc. The **Mira 8000™** is particularly suitable for main roads, arterial routes, railways crossings and large open spaces.

The intelligent energy management system (microprocessor) of the **Mira 8000™** guarantees uninterrupted operation even in bad weather conditions, low ambient light and weak sunlight

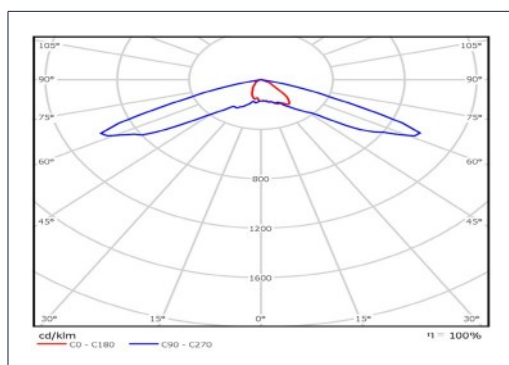
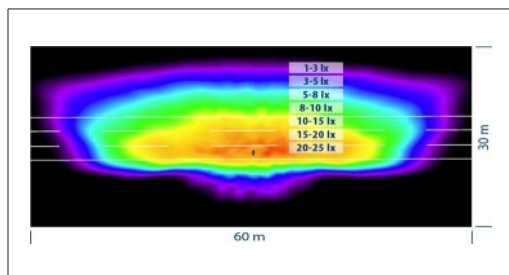
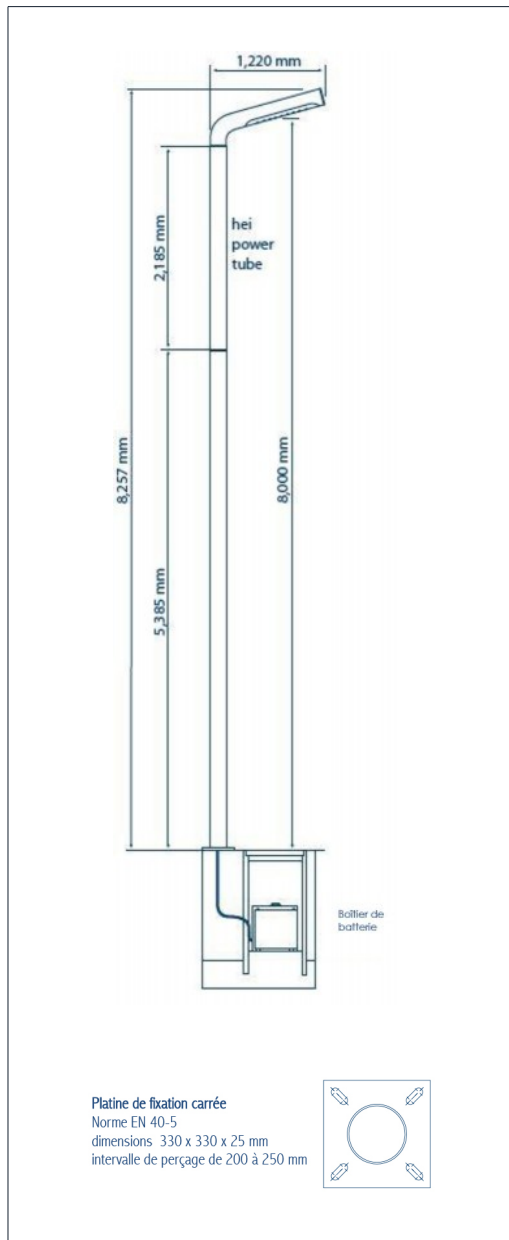
This model offers 80 LEDs delivering a luminous efficiency between 134 and 136 lm/w, on the ground.

Options:

- Motion sensor for customised programming
- Hybrid system combining solar and on-grid
- LED colour temperature options of 4,100k and 3,100k

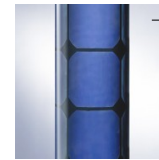
Our partners

Technical data



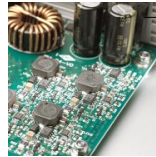
hei power LED™
(Antares)

- 150 lumen/Watt at 5'300k (at source)
- Up to 12'000 lumen possible (at source)
- 4 LED chips per optical
- Possibility of upgrading to the new generation LED with the evolution of new technology (possible to exchange unit by unit)
- Optimized light distribution



hei power tube™

- Patented photovoltaic technology
- Poly-directional energy yield (360°)
- Accumulates energy by absorbing solar and ambient light
- Monocrystalline silicon cells (Mira & Champ)
- Multi-crystalline silicon celles (Antares)
- Withstands high wind loads
- No deposits on surface
- Reduced risk of vandalism



hei power control™

- Autonomous, individually programmable
- Smart system of monitoring (8-10 nights autonomy)
- Automatic battery management
- MPP Tracking for maximized energy yield
- Brightness control by PWM (Pulse with modulation)



Economic & Ecologic advantages

- Reduced setup costs
- Low maintenance costs
- No electricity consumption
- Zero energy costs in operation
- Zero CO2 emission

OPTICAL FEATURES		Mira 8000
Light source		10 high efficiency LEDs
Maximum power*		40 Watt (*at source)
Maximum luminous flux*		6'000 lm (*at source)
LED-light temperature		5'300K Cool white, CRI > 70 (standard), optional 4'100K and 3'100K
LEDs life expectancy		> 50'000 hours
LIGHT SYSTEM		
Height installation / light spot		8'257 mm / 8'000 mm
Light pole diameter / materiel		180 mm / Steel, hot-dip galvanied
Light head color		RAL 9005 Dark black (standard)
Light pole color		Paint-coated RAL 9006 white aluminium (standard)
Weight		ca. 200 kg
Installation mode		Flange plate (opt. sleeve foundation)
STREET LIGHTING		
Optimum pole distance		25 m
Typical street width		9 m
Typical illuminance		15 lx
HEI POWER TUBE		
PV module length / diameter		2'205 mm / 180 mm
PV Cells material / number		Monocrystallines cells / 64
Energy efficiency		200 Wp
HEI POWER CONTROL		
Controller		Yes
Profil dynamic lighting		Custom and 36 preset lighting profiles
Capacity of the battery		120 Ah / 12 V - VRLA cycle type
STANDARDS / COMPLIANCES		
Illumination / EMV, electronics certificates		EN 13201 / EN 55015, EN 61547
Certification light pole / PV module		EN 40-5, EN 40-3-1, ISO 1461 / EN 61215 (adapted)
Ingress protection rating		IP65
Temperature of service		-30°C à +70°C
CE-Certification / RoHS / ISO Standards		Yes / Yes / ISO 9001-2008